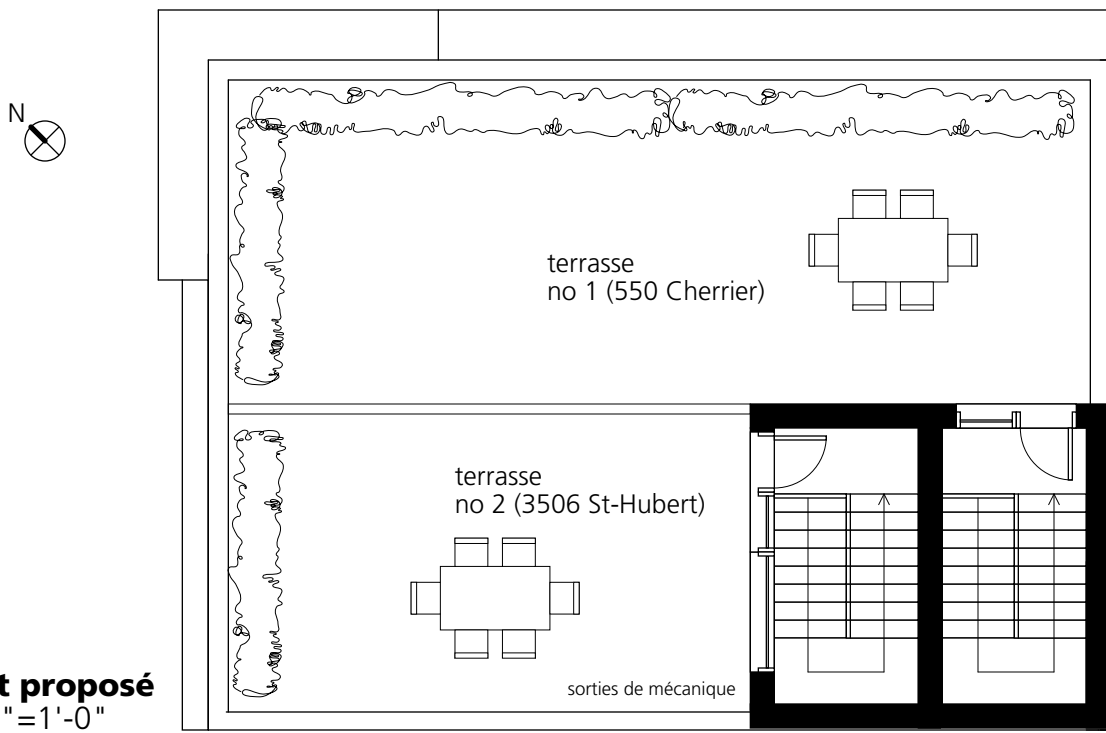




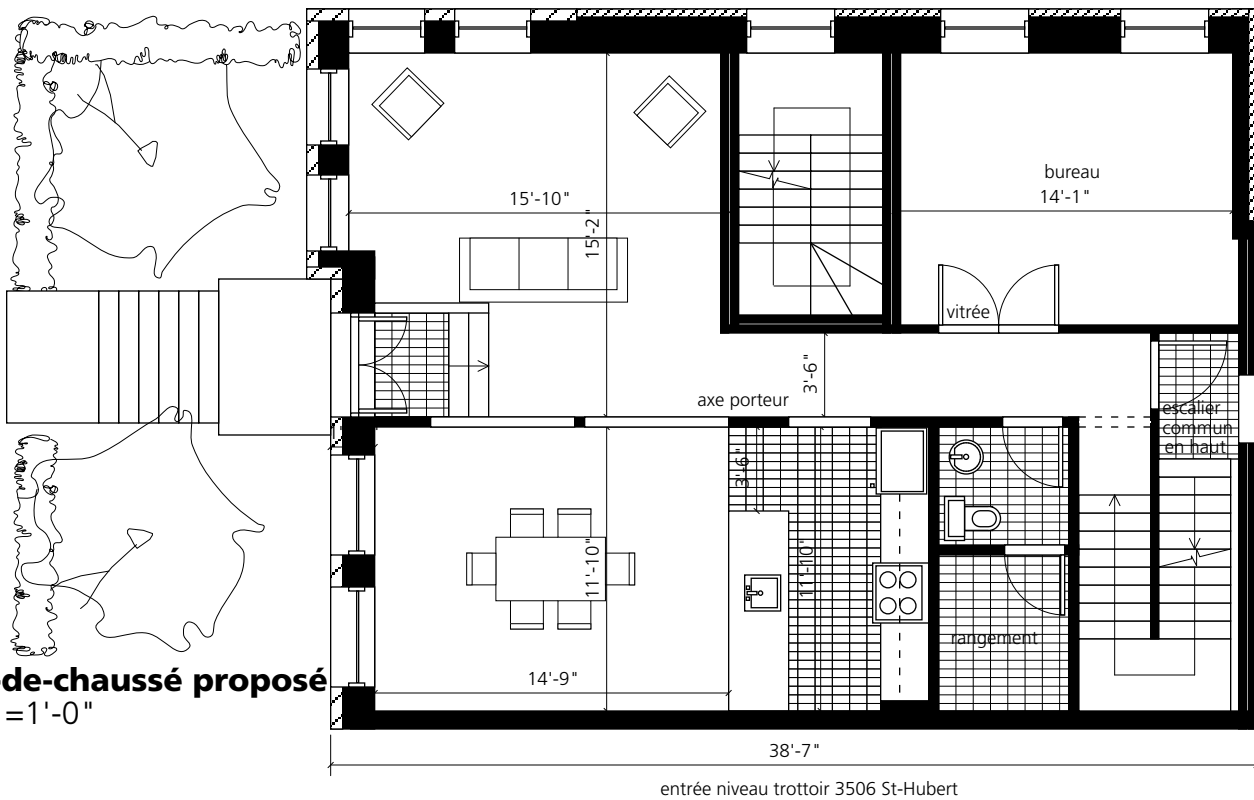
# 550 Cherrier

**Unité 2 étages,**  
 2 000 pi<sup>2</sup> brut + terrasse 485 pi<sup>2</sup> = 2 485 pi<sup>2</sup>  
 (sujet à changements)

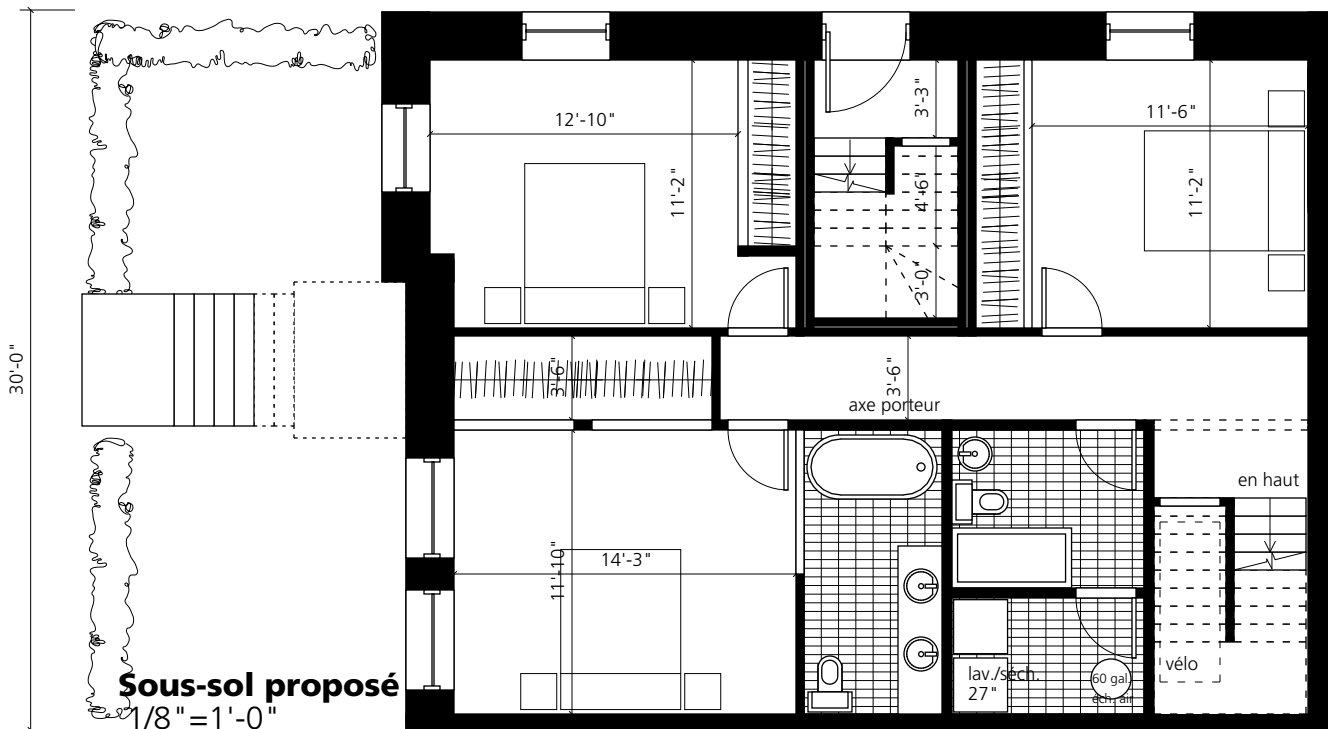
D. Morin, architecte



**Toit proposé**  
 1/8" = 1'-0"



**Rez-de-chaussé proposé**  
 1/8" = 1'-0"



**Sous-sol proposé**  
 1/8" = 1'-0"

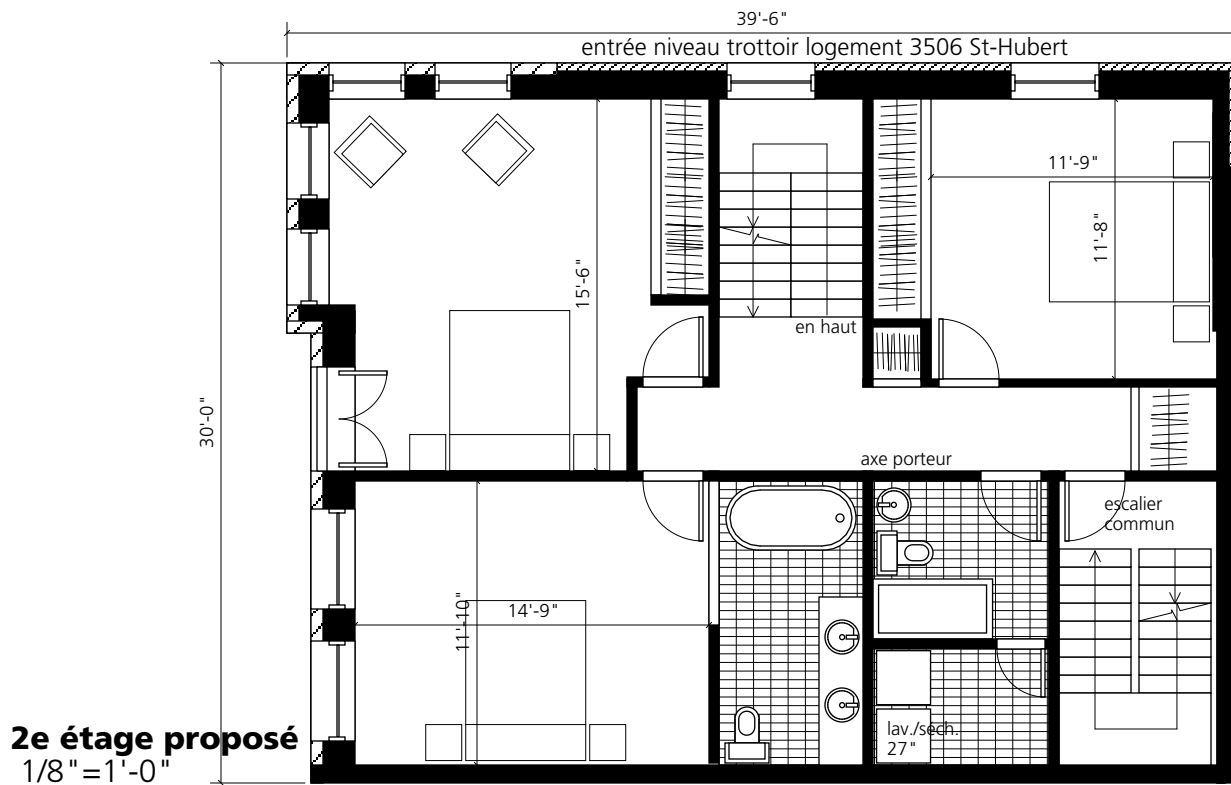
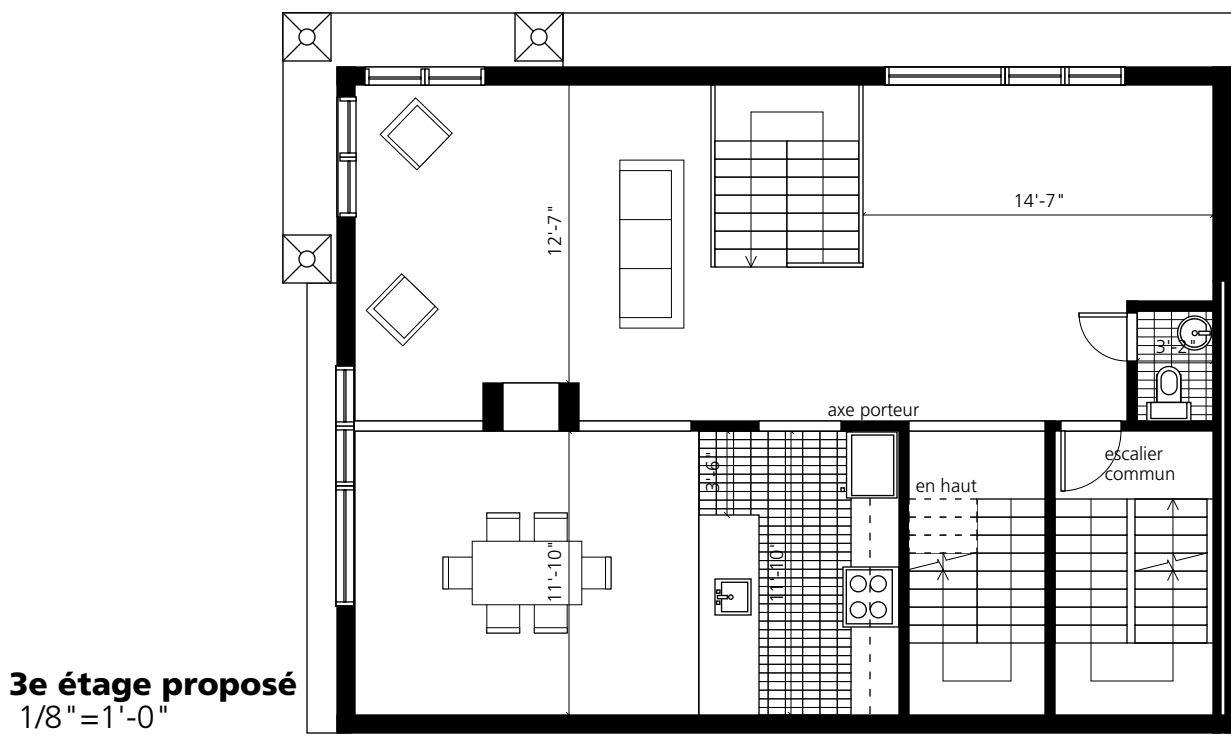
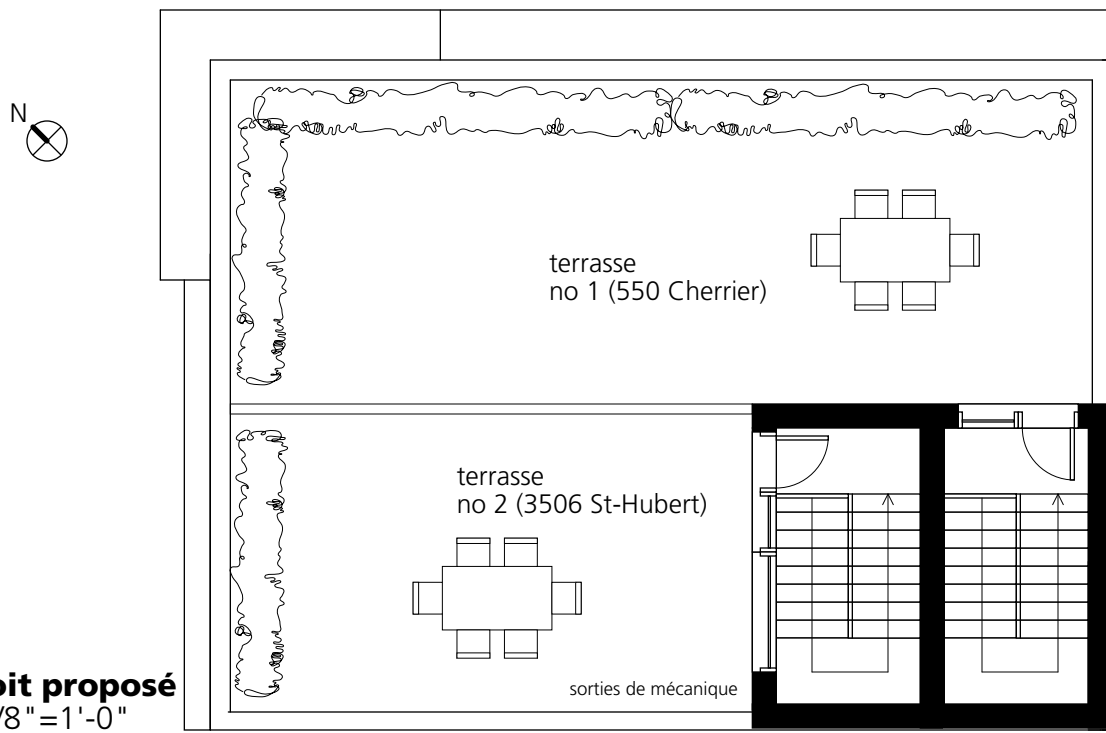




# 3506 St-Hubert

**Unité 2 étages,**  
 1 900 pi<sup>2</sup> brut + terrasse 270 pi<sup>2</sup> = 2 170 pi<sup>2</sup>  
 (sujet à changements)

D. Morin, architecte

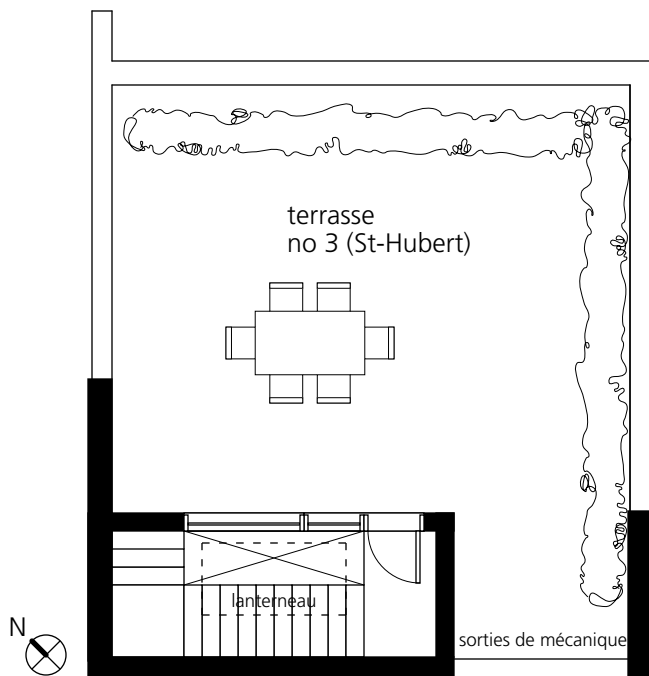




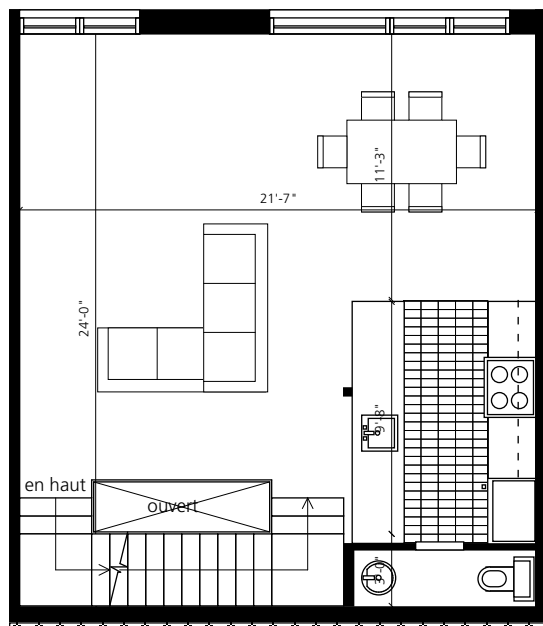
# 3504 St-Hubert

**Unité 4 étages,**  
 2 230 pi<sup>2</sup> brut + terrasse 430 pi<sup>2</sup> = 2 660 pi<sup>2</sup>  
 (sujet à changements)

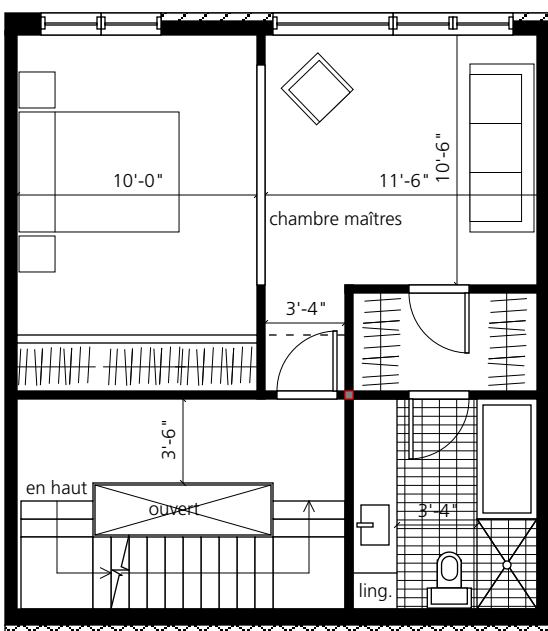
D. Morin, architecte



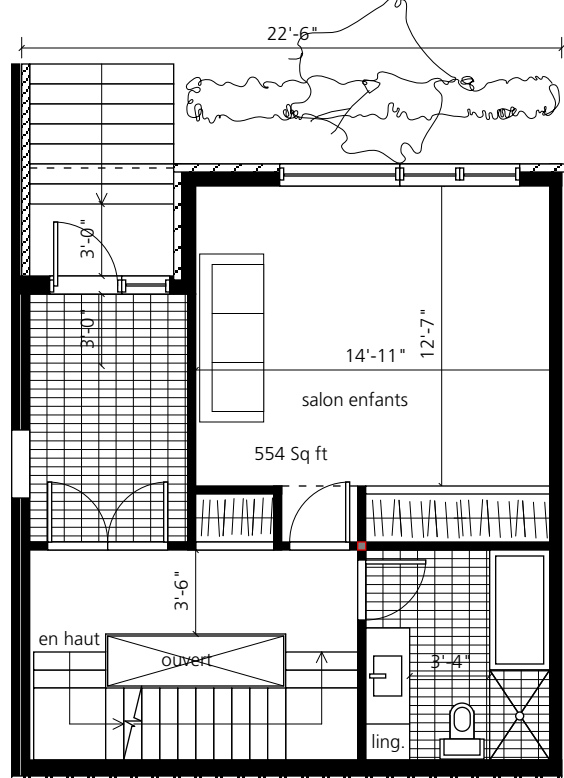
**Toit proposé 1/8" = 1'-0"**



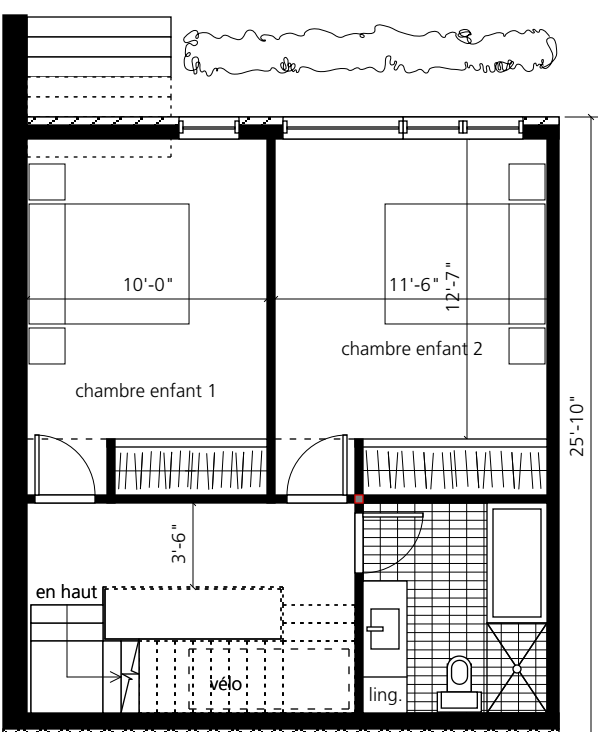
**3e étage proposé 1/8" = 1'-0"**



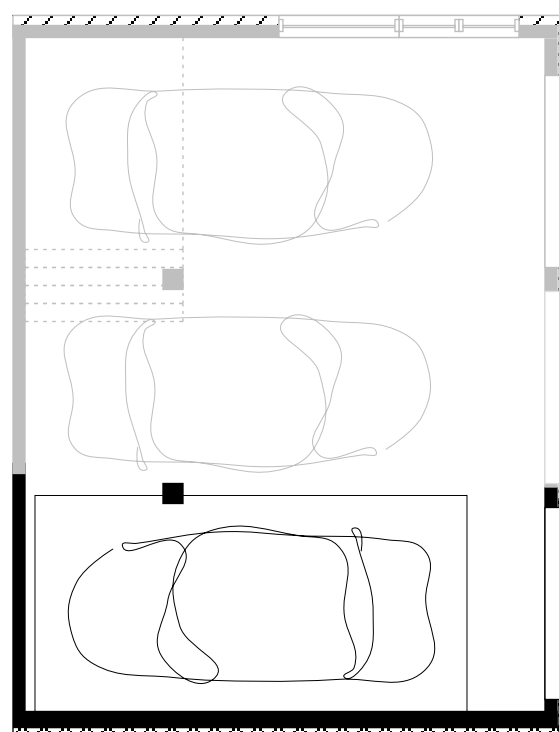
**2e étage proposé 1/8" = 1'-0"**



**Rez-de-chaussé proposé 1/8" = 1'-0"**



**Sous-sol proposé 1/8" = 1'-0"**



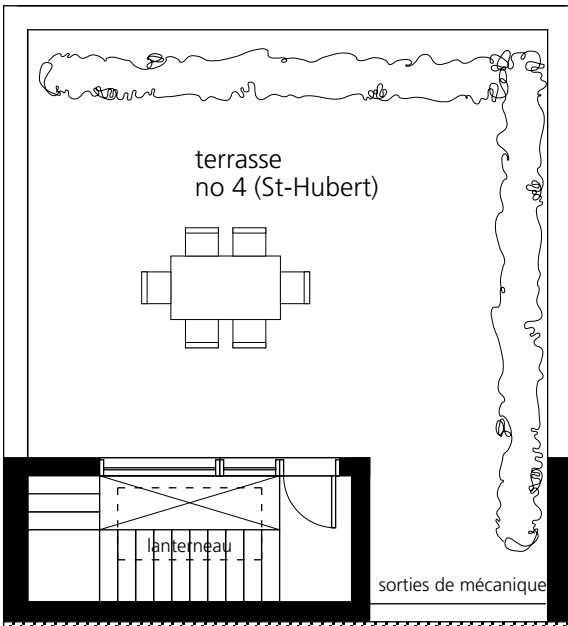
**Garage proposé 1/8" = 1'-0"**



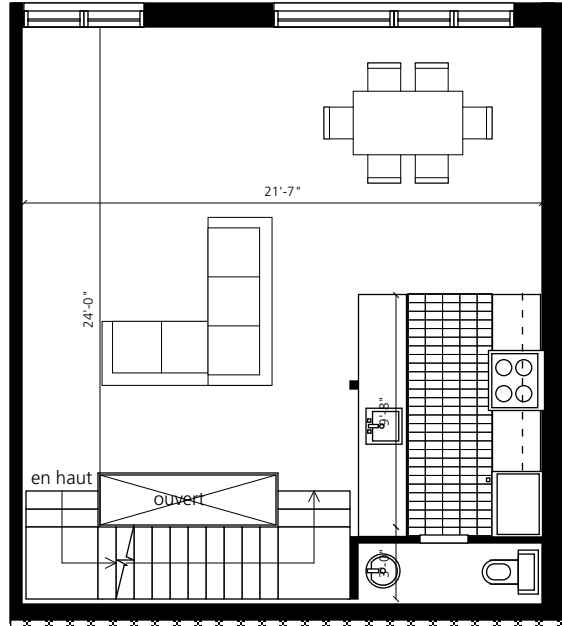
# 3502 St-Hubert

**Unité 4 étages,**  
 2 330 pi<sup>2</sup> brut + terrasse 430 pi<sup>2</sup> = 2 760 pi<sup>2</sup>  
 (sujet à changements)

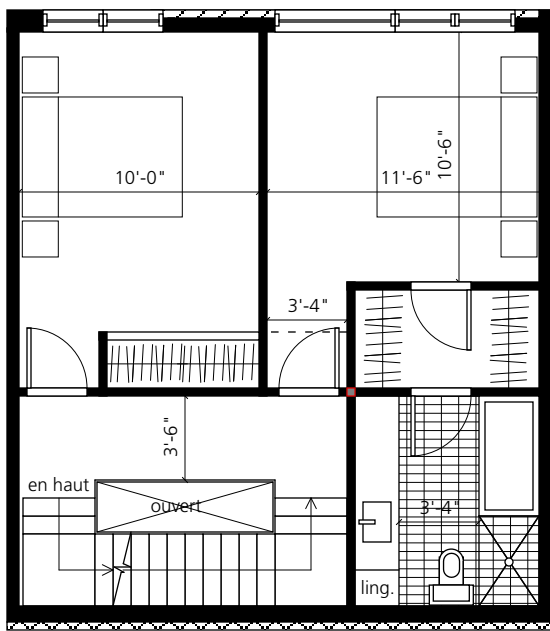
D. Morin, architecte



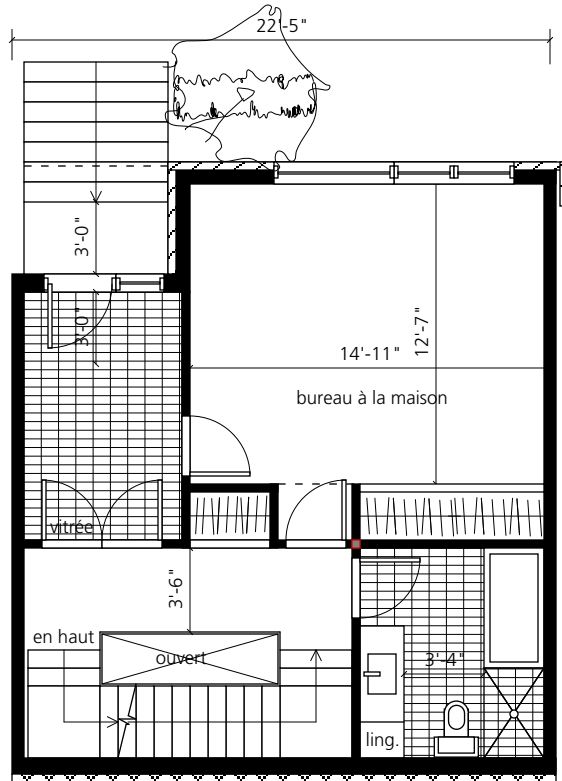
**Toit proposé 1/8" = 1'-0"**



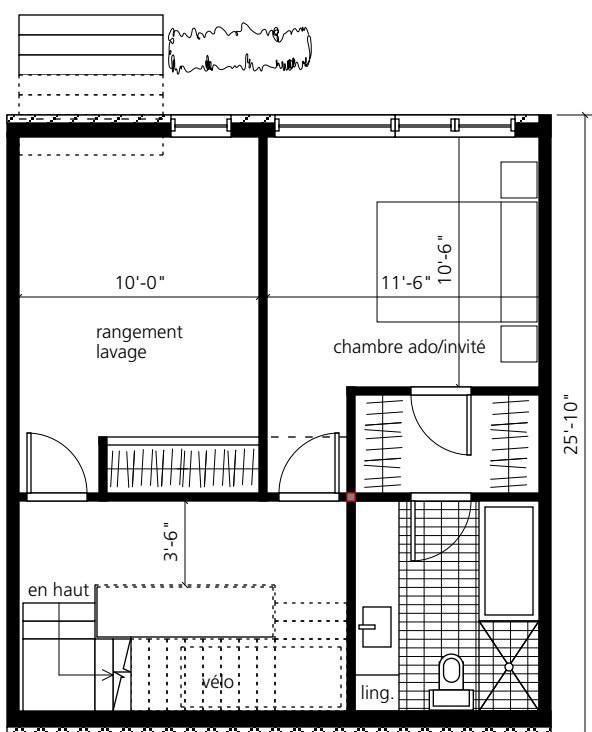
**3e étage proposé 1/8" = 1'-0"**



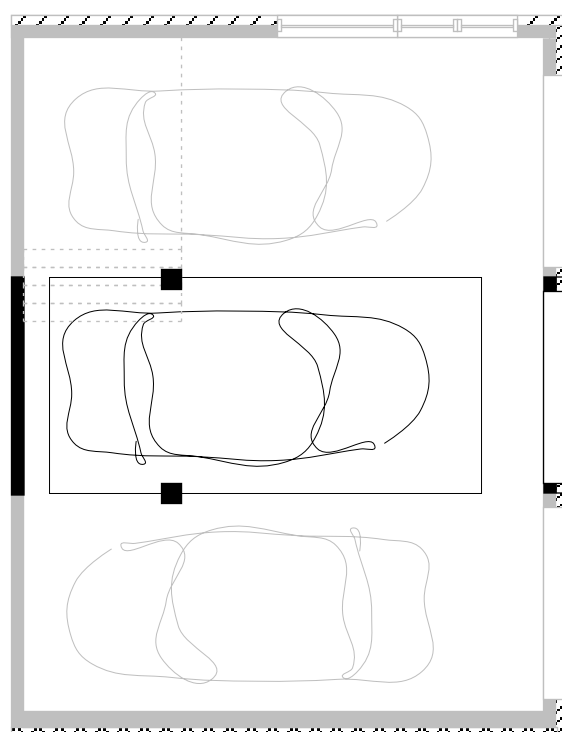
**2e étage proposé 1/8" = 1'-0"**



**Rez-de-chaussé proposé 1/8" = 1'-0"**



**Sous-sol proposé 1/8" = 1'-0"**



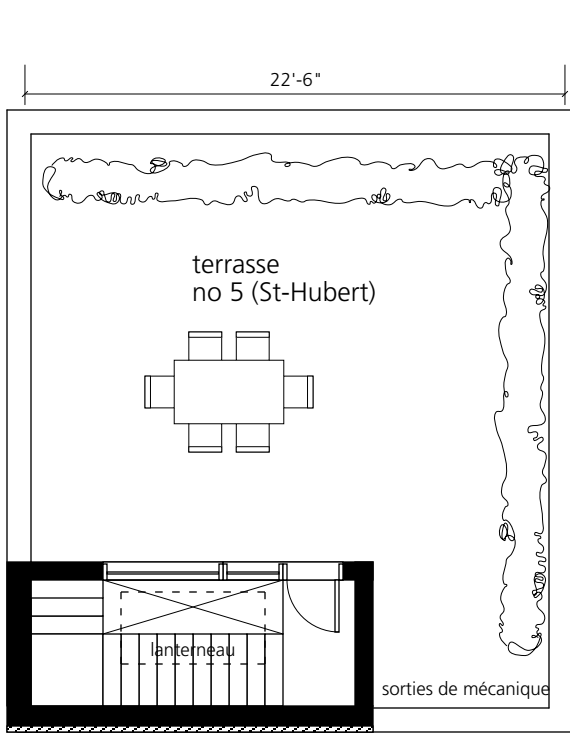
**Garage proposé 1/8" = 1'-0"**



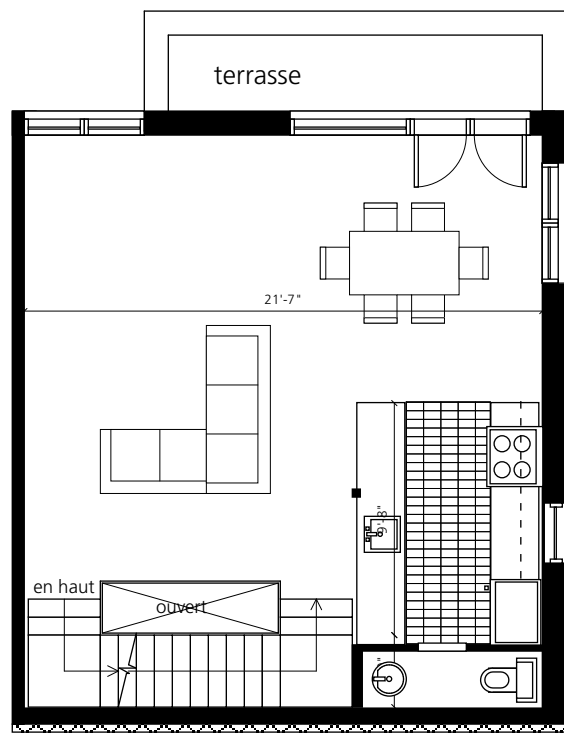
# 3500 St-Hubert

**Unité 3 étages,**  
 1 900 pi<sup>2</sup> brut + terrasse 480 pi<sup>2</sup> = 2 380 pi<sup>2</sup>  
 (sujet à changements)

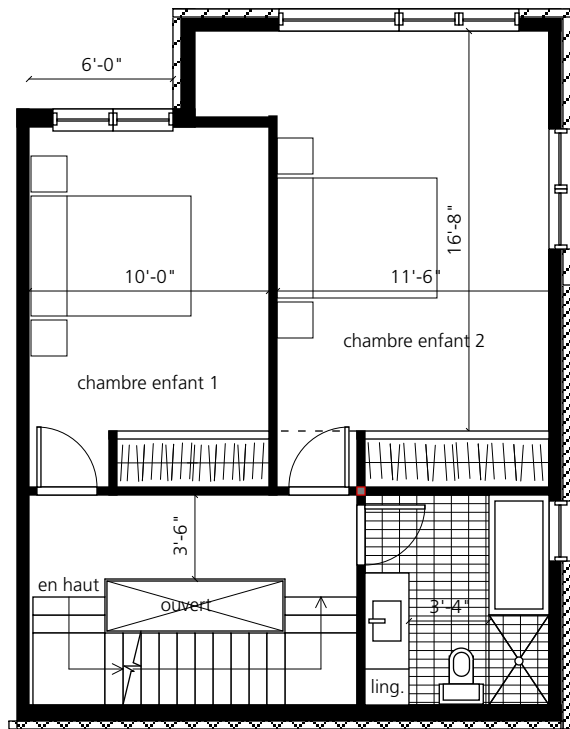
D. Morin, architecte



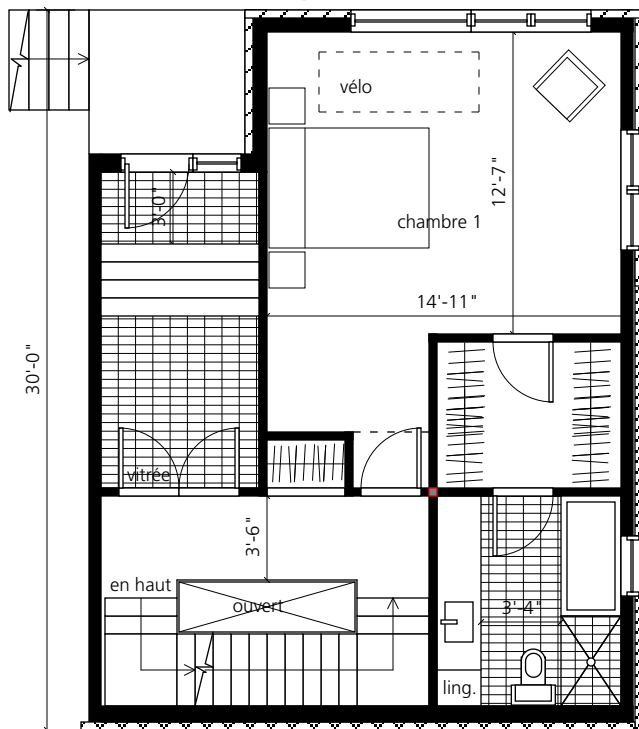
**Toit proposé 1/8" = 1'-0"**



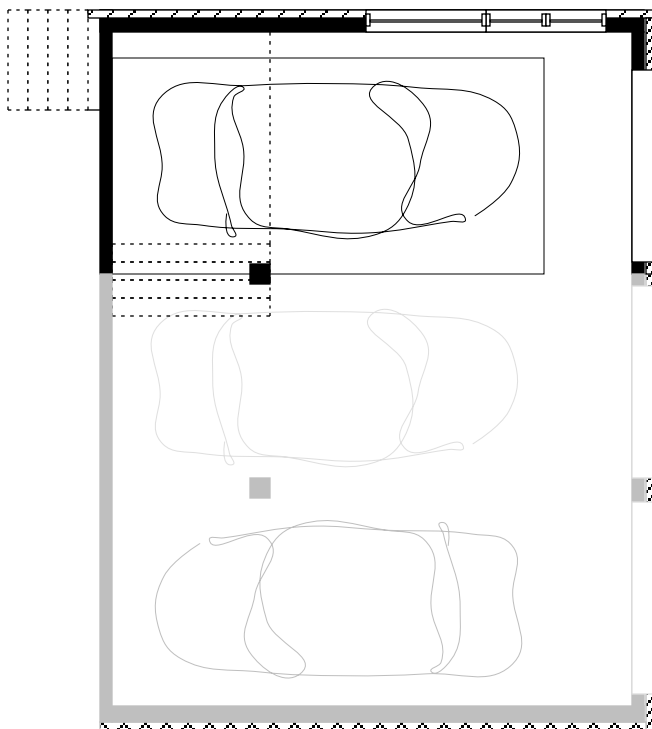
**3e étage proposé 1/8" = 1'-0"**



**2e étage proposé 1/8" = 1'-0"**



**Rez-de-chaussé proposé 1/8" = 1'-0"**



**Garage proposé 1/8" = 1'-0"**

